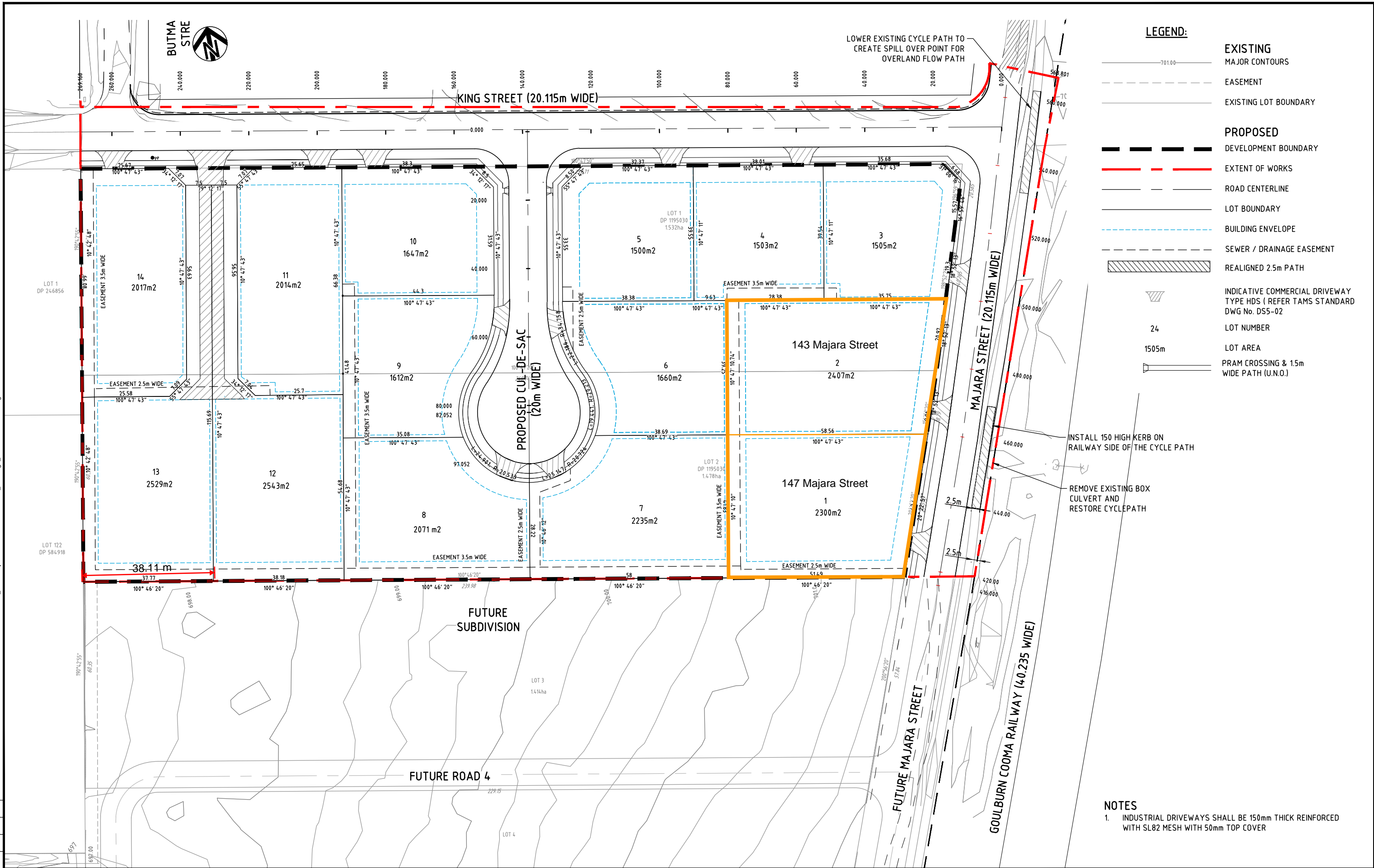


THE PLOT DATE
11 Mar 2016

DRAWING FILE LOCATION NAME
V:_Yau\Projects\3002456\CADD\DWG01_DAI\Stage_13\3002456-DA110.dwg

100 mm ON A1



- LEGEND:**
- 701.00— EXISTING MAJOR CONTOURS
 - - - - - EASEMENT
 - - - - - EXISTING LOT BOUNDARY
 - — — — — PROPOSED DEVELOPMENT BOUNDARY
 - — — — — EXTENT OF WORKS
 - - - - - ROAD CENTERLINE
 - - - - - LOT BOUNDARY
 - - - - - BUILDING ENVELOPE
 - - - - - SEWER / DRAINAGE EASEMENT
 - ▨ REALIGNED 2.5m PATH
 - ▽ INDICATIVE COMMERCIAL DRIVEWAY TYPE HDS (REFER TAMS STANDARD DWG No. DS5-02)
 - 24 LOT NUMBER
 - 1505m LOT AREA
 - PRAM CROSSING & 1.5m WIDE PATH (U.N.O.)

INSTALL 150 HIGH KERB ON RAILWAY SIDE OF THE CYCLE PATH

REMOVE EXISTING BOX CULVERT AND RESTORE CYCLEPATH

NOTES
1. INDUSTRIAL DRIVEWAYS SHALL BE 150mm THICK REINFORCED WITH SL82 MESH WITH 50mm TOP COVER

REVISION	DATE	DES/DFT	WVR	APPD
04	11.03.16	MD/CD	004	P.E.
03	19.10.15	MD/CD	003	P.E.
02	14.10.15	MD/CD	002	P.E.
01	18.08.15	MD/KG	001	P.E.

Principal
Joe Handoko

All setting out should be carried out in accordance with GAA/Council's standard drawings or as nominated on hard copy plans provided by SMEC. Any digital information supplied by this office is for information only. Any discrepancies should be discussed with the superintendent.

Project Leader
P. EVANS
Designed
M. DOWNES
Drawn
M. DOWNES
Checked
P. EVANS
Authorised
P. EVANS
Date
OCTOBER 2015

Scale @ A1
AS SHOWN

0 5 10 20
1:500

© SMEC Australia Pty Ltd
ABN 47 065 475 149

These designs and drawings are the copyright of SMEC Australia Pty Ltd. The drawing shall not be reproduced or copied, in whole or part, without the written permission of SMEC Australia Pty Ltd. The contents of this drawing are electronically generated, are confidential and may only be used for the purpose for which they are intended.

SMEC AUSTRALIA
Oracle Building, Suite 2 Level 1,
243 Northbourne Avenue, Lyneham, ACT, 2602
p +61 2 6234 1900 | f +61 2 6234 1966 | www.smec.com

Adelaide +61 8 8225 9800 Gold Coast +61 7 5578 0222
Brisbane +61 7 3811 8988 Melbourne +61 3 9369 0800
Campbelltown +61 2 4640 8222 Perth +61 8 9323 5900
Geelong +61 3 5228 3100 Traralgon +61 3 5173 0100

KING STREET INDUSTRIAL ESTATE
PROPOSED LOT LAYOUT PLAN

Drawing No. 3002456-DA110 Rev 04
Dev. App. No.
Sheet No. 3 of 18

Subject to Approval